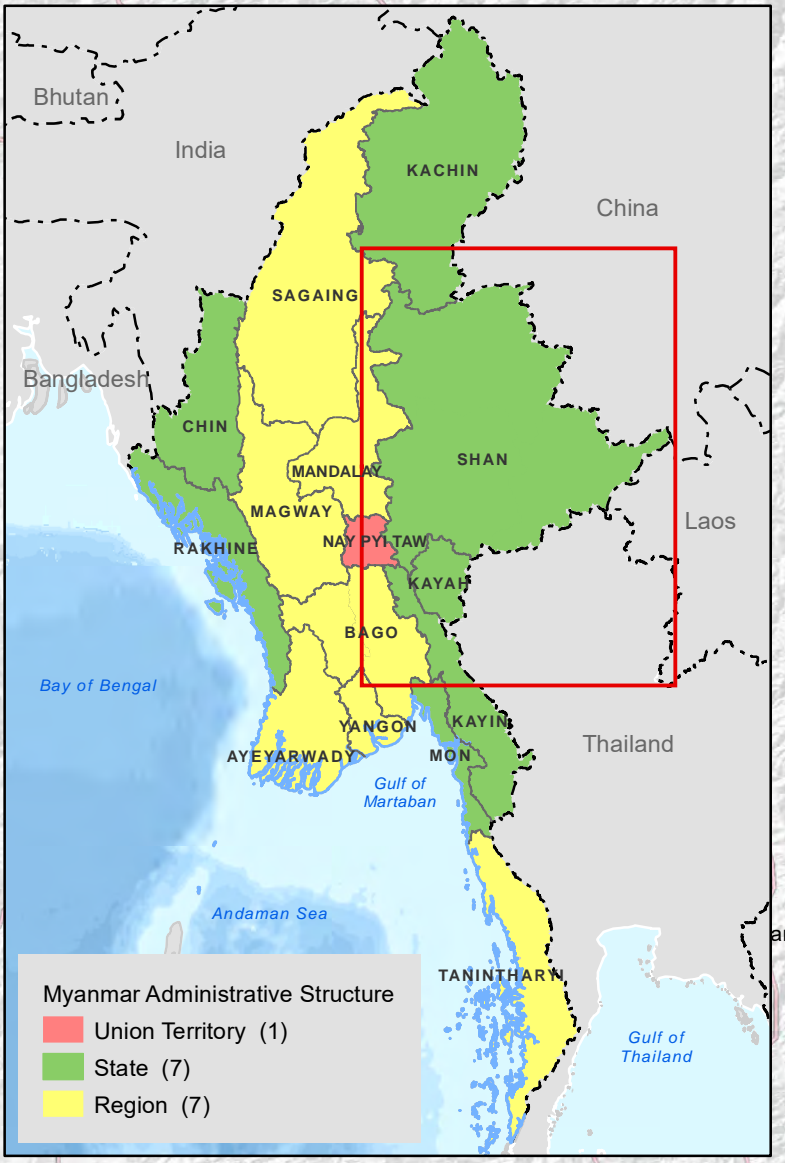
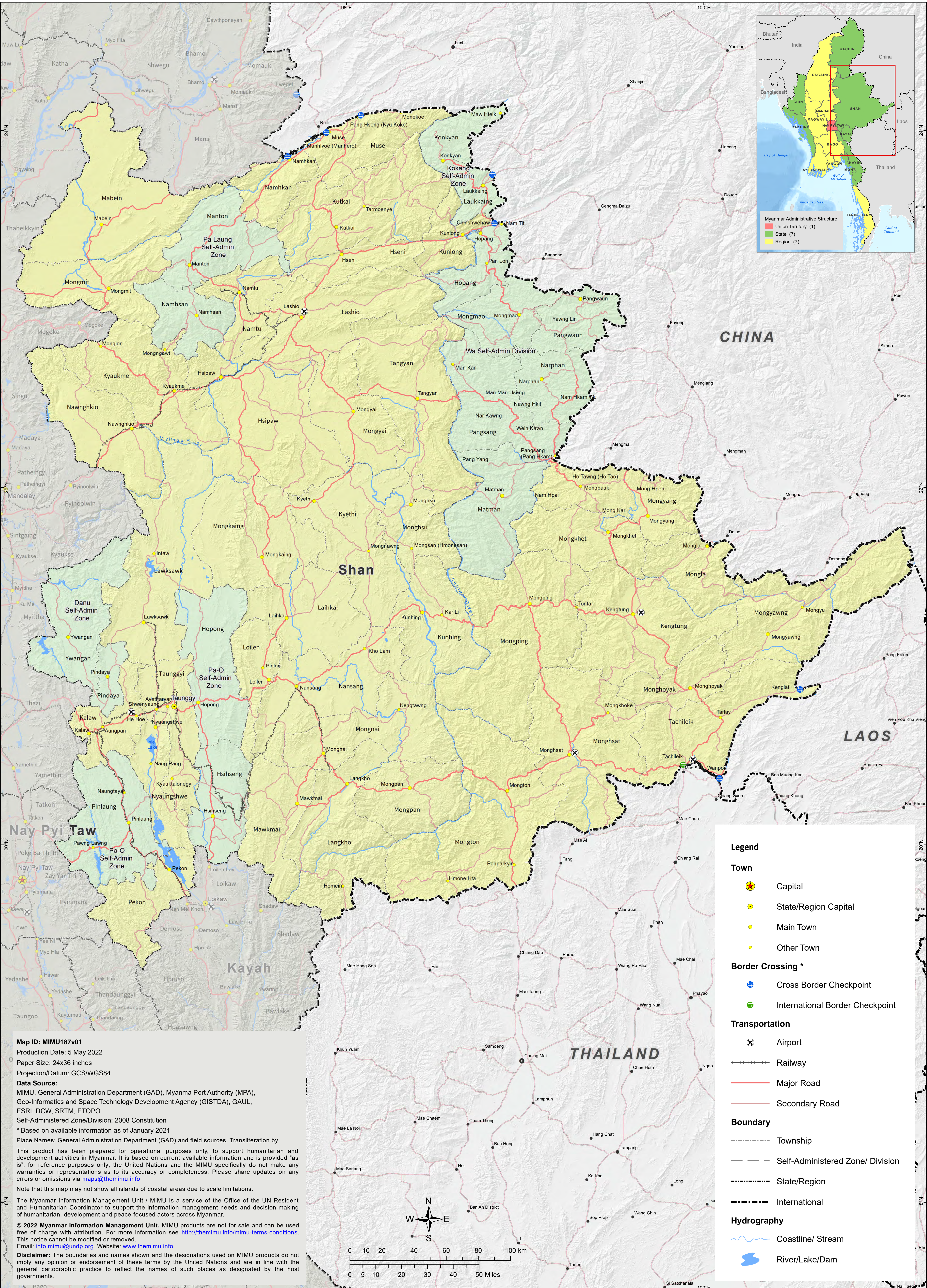




# Shan State Administrative Map



**Legend**

**Town**

- Capital (Yellow star)
- State/Region Capital (Yellow circle)
- Main Town (Yellow dot)
- Other Town (Small yellow dot)

**Border Crossing \***

- Cross Border Checkpoint (Blue circle with 'C')
- International Border Checkpoint (Green circle with 'I')

**Transportation**

- Airport (Airplane icon)
- Railway (Black line with cross-ticks)
- Major Road (Red line)
- Secondary Road (Grey line)

**Boundary**

- Township (Dashed line)
- Self-Administered Zone/ Division (Dotted line)
- State/Region (Dashed line with dots)
- International (Thick dashed line)

**Hydrography**

- Coastline/ Stream (Blue wavy line)
- River/Lake/Dam (Blue area)

**Map ID:** MIMU187v01  
**Production Date:** 5 May 2022  
**Paper Size:** 24x36 inches  
**Projection/Datum:** GCS/WGS84  
**Data Source:** MIMU, General Administration Department (GAD), Myanmar Port Authority (MPA), Geo-Informatics and Space Technology Development Agency (GISTDA), GAUL, ESRI, DCW, SRTM, ETOPO  
**Self-Administered Zone/Division:** 2008 Constitution  
 \* Based on available information as of January 2021  
 Place Names: General Administration Department (GAD) and field sources. Transliteration by this product has been prepared for operational purposes only, to support humanitarian and development activities in Myanmar. It is based on current available information and is provided "as is", for reference purposes only; the United Nations and the MIMU specifically do not make any warranties or representations as to its accuracy or completeness. Please share updates on any errors or omissions via [mips@themimu.info](mailto:mips@themimu.info)  
 Note that this map may not show all islands of coastal areas due to scale limitations.  
 The Myanmar Information Management Unit / MIMU is a service of the Office of the UN Resident and Humanitarian Coordinator to support the information management needs and decision-making of humanitarian, development and peace-focused actors across Myanmar.  
 © 2022 Myanmar Information Management Unit. MIMU products are not for sale and can be used free of charge with attribution. For more information see <http://themimu.info/mimu-terms-conditions>. This notice cannot be modified or removed.  
 Email: [info.mimu@undp.org](mailto:info.mimu@undp.org) Website: [www.themimu.info](http://www.themimu.info)  
**Disclaimer:** The boundaries and names shown and the designations used on MIMU products do not imply any opinion or endorsement of these terms by the United Nations and are in line with the general cartographic practice to reflect the names of such places as designated by the host governments.

